

RICHLAND PARISH COMM CENTER CONSOLE SPECIFICATION

**Minimum Specifications for bids to be opened by the Richland
Parish Communications District on January 3, 2020
Three (3) Dispatch workstations (2 corner sit/stand positions & 1 linear desk); Counter space;
Book storage; Open air technology storage;
Cable Management; Lockers (8 person)**

1. Project Description

- a. Richland Parish will be purchasing 24/7 dispatch consoles and matching storage systems. The furniture will have to be installed no later than March 31, 2020.

2. General Conditions

- a. Comply with the applicable provisions of the referenced standards except as modified by governing codes and the Contract Documents. Where a recommendation or suggestion occurs in the referenced standards, such recommendation or suggestion shall be considered mandatory. In the event of conflict between referenced standards, this specification or within themselves, the more stringent standard or requirement shall govern.
- b. Sealed bids shall be received until 8:00 A.M., January 3, 2020 at P.O. Box 855, Rayville, LA 71269 and 708 Julia Street, Suite B103C, Rayville, LA 71269 and thereafter publicly opened and read aloud for furnishing three dispatch workstations (2 corner sit/stand positions & 1 linear desk), counter space, book storage, open air technology storage, cable management, & lockers (8 person).
- c. All bids shall be submitted on the form furnished for this purpose and shall be filled out with ink or typed and signed in ink and submitted in a sealed envelope, clearly identified as such, before the time set for receiving bids. Bids received after the set time shall be returned to bidder unopened.
- d. All furnished equipment shall be new, of latest design and production, completely serviced and ready for operation. Any items appearing in the manufacturer's regular published specifications furnished by the Bidder are assumed to be included in the Bidders Proposal. Equipment of similar style, type, character, quality and purpose conforming to be detailed requirements listed will be considered equivalent. Bidders are cautioned to read the specifications carefully, as they may include special requirements not commonly offered by the manufacturer. Optional bids or bids with change in form will be rejected.
- e. Bidders shall furnish manufacturer's specifications and all equipment, materials and components, shall be in conformity with the specifications herein, including all items listed as standard equipment by the manufacturer.
- f. In these specifications, there are specific certain equipment and materials most suitable for the service anticipated. This is not done to eliminate other items as good and sufficient. The Bidder may prepare his bid on the basis of other makes of equipment and materials provided that the proposed substitution is superior or equal in construction and/or efficiency, meet the technical specifications and that high quality has been demonstrated by several years of service in similar conditions. Where these specifications are defined specifications, it shall be understood that this is for the purpose of conveying the quality standards of products desired including the general style, type, character and quality.

- g. ***If deviations from this SOW are to be included in a bid, the deviation must be clearly identified in the proposal.***

The Richland Parish Communications District reserves the right to reject all bids for just cause.

3. Minimum Specification

- a. Richland Parish has a requirement for quantity of 3 console furniture workstations that are designed for a 24 X 7 dispatch environment. 2 of the 3 workstation shall have the capability to raise and lower from a sitting to a standing position. Design must facilitate complex interaction between people, technology and environment. Console design shall be able to meet or exceed the functionality and performance of consoles for emergency communications dispatch applications. Console workstations shall be offered with a limited lifetime warranty.
- b. Consoles shall be modular and reconfigurable in design and also have the ability to reasonably adapt to future system upgrades. This is a mission critical operation with high demands and unique challenges, which requires absolute functionality in design and also fit a limited to space available.
- c. The console worksurface shall be one continuous piece. The single-surface sit-stand workstation shall exceed the requirements of HFES 100-2007 and ANSI/BIFMA in a durable steel console designed for 24/7/365 mission critical applications.
- d. The console must be designed to provide an ergonomic, durable, modular platform to support technology intensive, 24/7/365 environments.
- e. Height adjustable workstations must adjust from 22.2" – 48" and utilize a single-surface design that puts the entire work surface at a comfortable working height without any seams in the surface or keyboard mechanisms to get in the way. This will make it easier to achieve a downward gaze to the monitors since the entire surface can achieve the HFES/BIFMA requirements for input device platforms. This solution along with fully articulating monitor arms provide a sound ergonomic workstation.
- f. All height adjustable workstations must be equipped with an integrated mechanical anti-collision switch located at the front edge of the work surface. If an obstruction is detected, the actuation of the workstation immediately halts and reverses direction approximately 1". The mechanical switch does not rely on controller sensors that look for sudden spikes in the amperage draw of each leg, which is unreliable. The mechanical switch triggers the anti-collision feature regardless of the speed of impact.
- g. All height adjustable surfaces include safety gaps to prevent pinch points.

4. Structural Wall Specification

- a. The console support system consists of a structural wall that supports the worksurfaces, lifting systems, technology storage and personal storage. The structural wall not only provides the structural integrity of the system, it also provides cable management channels for power and data distribution, J-box mounting locations for power and data terminations and accommodations for technology integration such as CPU's, UPS's, KVM switches, vertical rack equipment and other peripheral devices.
- b. The horizontal cable route shall enable red/black separation per AFSSI-7702 requirements.

- c. Additional accessories may be available that will attach to the structure to further customize and add to its functionality, including user convenience accessories as well as brackets and mounting kits for integration of technology.
- d. All mechanical connections between components must be steel to steel bolt together construction for optimal structural integrity and easy reconfiguration.
- e. Modular design shall allow for any components to be added, reconfigured, or removed for future growth.
- f. All panels shall have radiused corners for comfort and safety.
- g. Structural walls must have storage and mounting area for electrical and data boxes.
- h. The structural wall shall provide unobstructed hidden cable routes. The walls must also provide a cable "pass through" port from the wall to the desktop.
- i. Each structural wall end frame provides mounting locations for two (four total per structural wall section) standard 1900 junction boxes for power and data termination. In addition to top and bottom access for each J-box, holes in the end frame must be provided to allow access the J-Box's rear knock-outs providing ultimate wiring flexibility.
- j. Structural walls shall have adequate leveling glides.
- k. Structural walls shall have two 1/4 - 20 grounding studs, one each located at the far left and right of each wall section to allow grounding of the system at any point.
- l. Work Stations must have vented panels along the inside and bottom surfaces to allow maximum ventilation and heat dissipation.
- m. Work Stations should have convenient access to the cable trays via an access panel located below the work surface.
- n. Corner connectors have the same horizontal cable management ports as the adjoining structural walls to provide continuous unobstructed horizontal cable management channels. Any steel surface must be powder coated.
- m. The top cap of the structural wall must be removable to allow access to cables.

5. Storage

- a. Each console must have (1) Box/Box/File Cabinet & (1) Technology Cabinet
- b. Each cabinet shall have a lockable front door.
- c. PC storage cabinets must include ventilation and unobstructed cable access.
- d. PC storage slide-out equipment shelves shall be equipped with full extension 150lb rated ball bearing slides.
- e. Each PC storage cabinet shall be equipped with a minimum of 6 outlets and one 15 Amp surge protector with 10' cord.

- f. If work surface is constructed of particle board, it must conform to ASTM A 208.1 M-3 standards.

6. Worksurface and Lifting Columns

- a. The worksurface will be supported by heavy duty lifting columns.
- b. Height adjustment range must rise to a standard 48" from the floor to the top of the work surface, which exceeds the HFES 100-2007, ANSI/BIMFA G1-2002 and all European standards for input device platforms.
- c. Lifting columns shall be enclosed in a minimum of 16 gauge steel
- d. Lifting columns have a lifting capacity of 300lbs and travel at approximately 1.5"/second for fast, easy adjustments. Fast adjustments increase the likelihood of being used to transition from sitting to standing working postures throughout the day.
- e. Lifting columns shall support a slatwall profile and cable routes that supports the work surface. This keeps the work surface and all slatwall mounted accessories/monitors moving together.
- f. Height adjustable workstations must utilize a single surface design that puts the entire work surface at a comfortable working height without any seams in the surface or keyboard mechanisms to get in the way.
- g. Slatwall system should be used to support monitors on fully articulating monitor arms and other accessory items.
- h. Cable route shall provide horizontal cable management system, power distribution, and data termination points.
- i. The cable route shall be connected to the structural wall with sufficient energy chains that provide vertical cable management that pass cables from the height adjustable workstation to the structural wall. This ensures that enough cable is used to prevent pulling throughout the entire height range, and keeps the cables neat and safe.
- j. The cable route shall have an adequate amount of locations to mount optional bellline convenience power and data outlets for easy access to power and data ports at the work surface level.
- k. There shall be easy access allowing cables to enter or exit the cable route at any point eliminating the need to drill grommet holes in the work surface.
- l. All height adjustable workstations shall be equipped with an integrated anti-collision system. If an obstruction is detected, the actuation of the workstation immediately halts and reverses direction.

7. Monitor Mounting Arms and Accessory Items

- a. All monitor mounts shall have fully articulating movement and are adjustable for varying monitor weights and dimensions.
- b. High pressure die-cast aluminum construction.

- c. Conforms to VESA 75mm and 100mm mounting patterns.
- d. All monitor arms must mount to the slatwall and travel with the primary sit-stand worksurface.
- e. Each sit-stand console position must have a quantity of (5) monitor arms. The linear desk must have a quantity of (4) monitor arms.

8. Storage Units

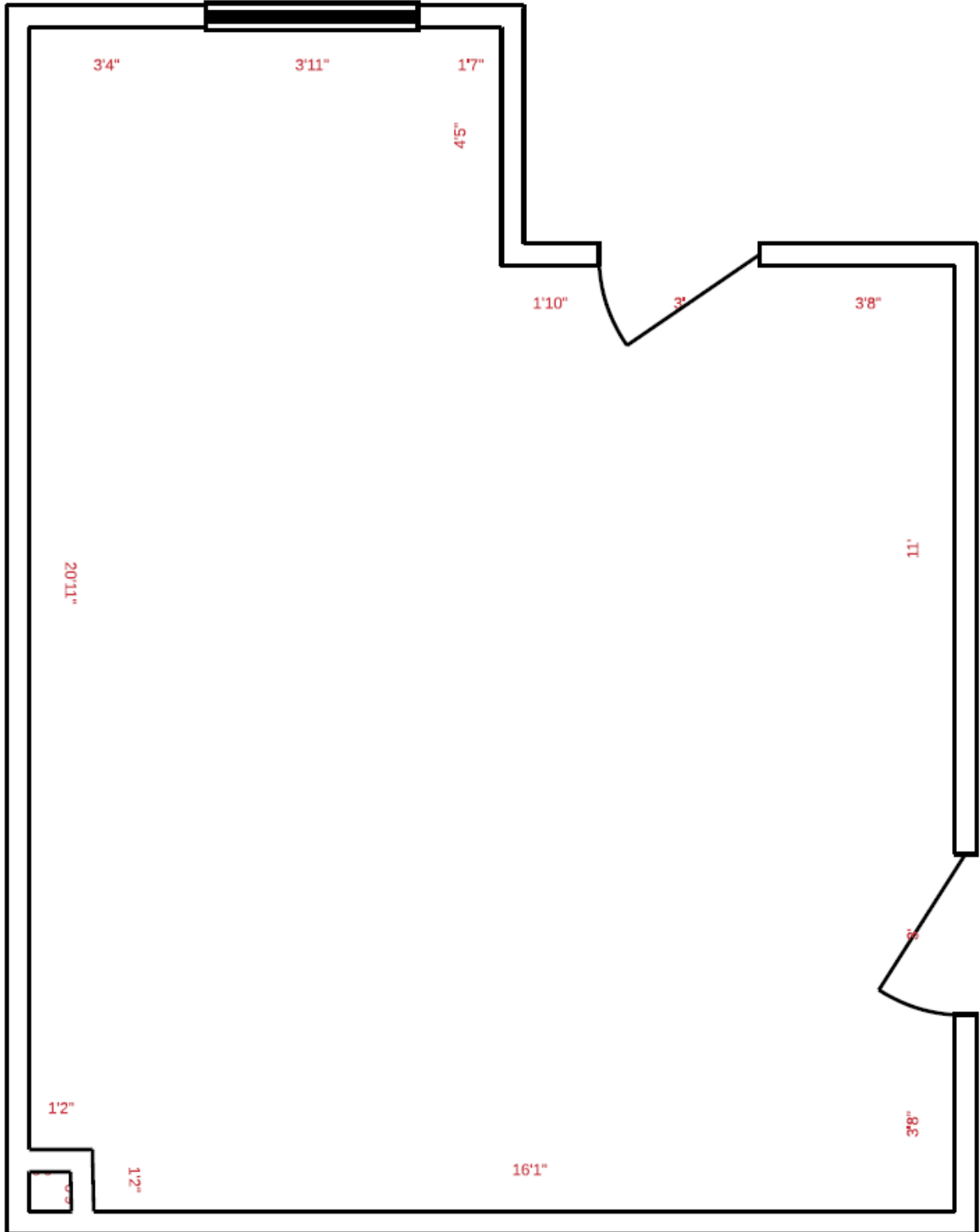
- a. All storage units must be manufactured by the console manufacturer to assure consistent fit and finish.
- b. Personal lockers shall be provided with 8 units. The locker shall match the console furniture.

9. Current Model

- a. The equipment furnished under this specification shall be the latest improved model in current production, as offered to commercial trade, built for the U.S. market, and shall be of quality workmanship and material. Bidders may be required to submit documentation substantiating the aforementioned requirements. A list of references may also be required.

Specifications are used only to denote the quality standard of product desired and do not restrict bidders to the specific brand, make, manufacturer or specification named. These are used only to set forth and convey to prospective bidders the general style, type, and quality of product desired. Equivalent products will be acceptable.

Richland Parish Dispatch Room Layout



**Amendment 1
Richland Parish Furnished Dispatch Room Layout**

Dispatch Remodel

Garth Sullivan | December 20, 2019

